

TEAC

SERVICE MANUAL

SR-L35

WALL-MOUNTABLE
CD RECEIVER



NOTES

- PC board shown are viewed from parts side.
- The parts with no reference number or no parts number in the exploded views are not supplied.
- As regards the resistors and capacitors, refer to the circuit diagrams contained in this manual.
- ⚠ Parts marked with this sign are safety critical components. they must be replaced with identical components - refer to the appropriate parts list and ensure exact replacement.

[T/C]: UL/CSA [E]: EUROPE [UK]: U.K.

CONTENTS

1 SPECIFICATIONS	2
2 SAFETY INFORMATION	3
3 ADJUSTMENT AND CHECKS	4
4 EXPLODED VIEW AND PARTS LIST	7
5 PC BOARDS AND PARTS LISTS	12
6 WIRING DIAGRAM	20
7 INCLUDED ACCESSORIES	22

SR-L35

1 SAFETY INFORMATION

SAFETY INFORMATION

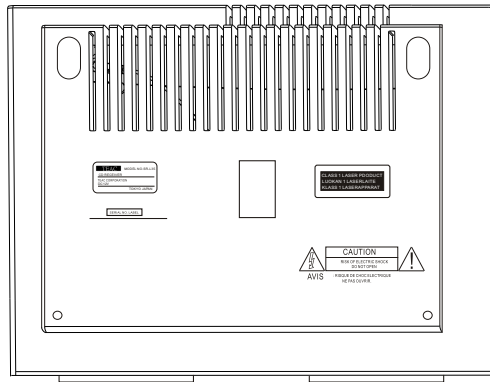
This product has been designed and manufactured according to FDA regulations "title 21, CFR, chapter 1, subchapter J, based on The Radiation Control for Health and Safety Act of 1968" and is classified as class 1 laser product. There is not hazardous invisible laser radiation during operation because invisible laser radiation emitted inside of this product is completely confined in the protective housings. The label required in this regulation is shown ①.

• **CAUTION**

USE OF CONTROLS OR ADJUSTMENT OR PERFORMANCE OF PROCEDURES OTHER THAN THOSE SPECIFIED HEREIN MAY RESULT IN HAZARDOUS RADIATION EXPOSURE.

DO NOT REMOVE THE PROTECTIVE HOUSING USING SCREWDRIVER.

IF THIS PRODUCT DEVELOPS TROUBLE, MAKE A CONTACT WITH OUR SERVICEMAN, AND DO NOT USE THE PRODUCT A TROUBLED STATE.



Optical pickup:

Type : CMS-M95BG6

Manufacturer : Samsung Electro-Mechanic

Laser output : Less than 0.5 mW on the objective lens

Wavelength : 760 -800 nm

2 SPECIFICATIONS

TUNER Section

Frequency Range (FM): 87.5MHz to 108.00 MHz (100kHz step) - USA
87.5MHz to 108.00 MHz (50kHz step) - EUR

Frequency Range (AM): 520kHz to 1710 kHz (10kHz step) - USA
522kHz to 1620 kHz (9kHz step) - EUR

CD PLAYER Section

Frequency response : 20 Hz ~ 20 kHz

Wow and Flutter: Unmeasurable

SPEAKER SYSTEM Section

Type : 65 mm x 2

Impedance : 4 ohms

GENERAL

Total Output Power: 3W + 3W

Power Requirements: 120V , 60Hz (via dedicated AC adaptor) - USA
230V , 50Hz (via dedicated AC adaptor) - EUR
240V , 50Hz (via dedicated AC adaptor) - UK

Power Consumption: 20 W

Dimension (W x H x D): 390 x 208 x 118 mm
15.4 x 8.2 x 4.6 (inches)

Weight: (net) 6.4 lbs (2.9 kg)

Standard Accessories: AC Adaptor x 1
Remote Control Unit (RC-969) x 1
FM Lead-type Antenna x 1
Owner's Manual x 1
Warranty Card x 1
Template for Wall Mounting x 1

- Design and specifications are subject to change without notice.
- Illustrations may differ slightly from production models.

SR-L35

3 ADJUSTMENTS AND CHECKS

3-1 TUNER SECTION

- Use a screwdriver with a plastic or ceramic grip for all adjustment.

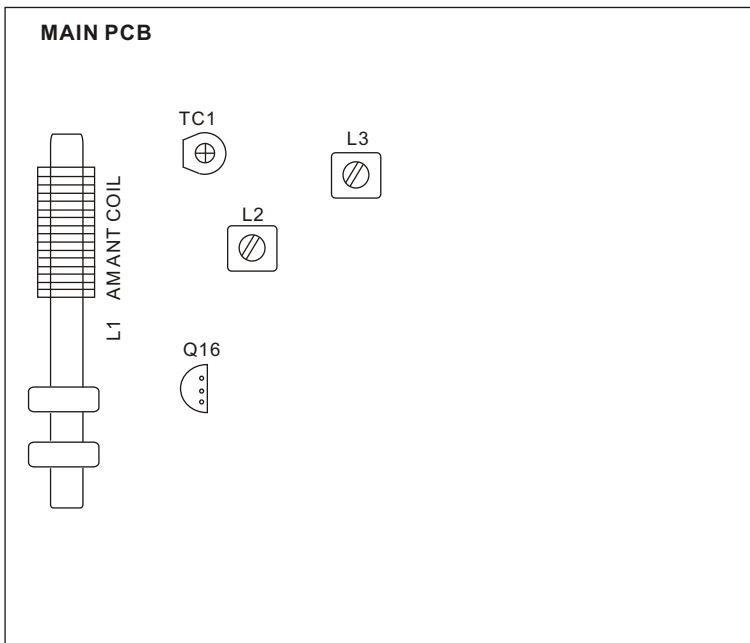
3-1-1 FM adjustment

1. Set the function switch to the TUNER position.
2. Set the BAND switch to the FM position.
3. Connect the signal generator output through a 75 ohm dummy antenna to "ANT" on MAIN PCB.
4. Connect the oscilloscope to the PHONES JACK terminal.
5. Connect the digital multimeter to Q16(C) on MAIN PCB.
6. Set the signal generator as listed in the alignment chart.

3-1-2 AM adjustment

1. Set the function switch to the TUNER position.
2. Set the BAND switch to the AM position.
3. Connect the test loop antenna across the output of the signal generator.
4. Connect the oscilloscope to the PHONES JACK terminal.
5. Connect the digital multimeter to Q16(C) on MAIN PCB.
6. Set the signal generator as listed in the alignment chart.

3-2 Adjustment and Test Points



3-2-1 AM Tuner

ITEM	SG SETTING	TUNER SETTING	ADJUSTMENT	MEASURING POINTS. RESULT
AM				
1. VOLTAGE adjustment		1710kHz (USA) 1620kHz (EUR)	L2	VT 8.0V
		520kHz (USA) 522kHz (EUR)	Check	VT 1.5V
2. IFT adjustment	450kHz 1kHz, 30% mod	600kHz (USA) 603kHz (EUR)	L3	Adjust for max. output.
3. ANT COIL adjustment	600kHz (USA) 603kHz (EUR) 1kHz, 30% mod	600kHz	L1 AM ant coil	Adjust for max. output.
4. TC1 adjustment	1400kHz (USA) 1404kHz (EUR) 1kHz, 30% mod	1400kHz	TC1 repeat step 3 and 4	Adjust for max. output and best waveform.
	Repeat step 3			

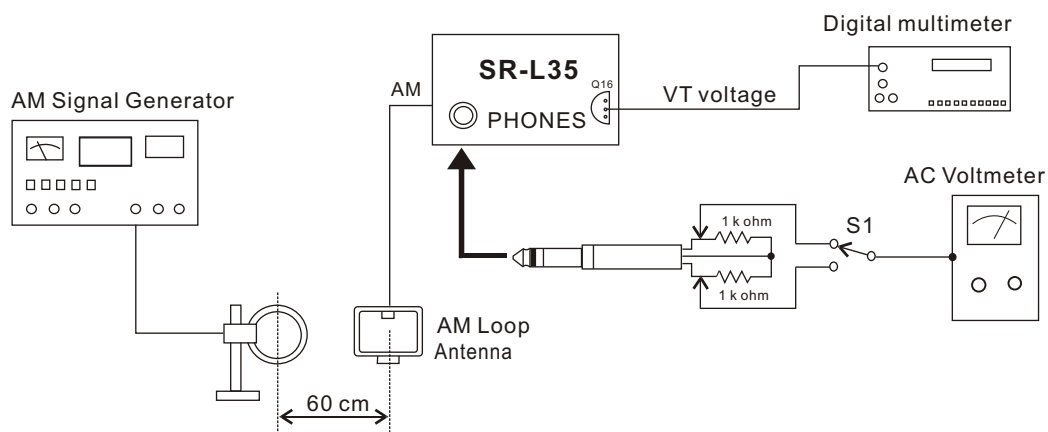


Fig. 3-2-2

SR-L35

3-2-3 FM Tuner

ITEM	SG SETTING	TUNER SETTING	ADJUSTMENTS	MEASURING POINTS. RESULT
FM				
1. VOLTAGE adjustment		106.1MHz	Check	VT 5.5-5.9V
		90.1MHz	Check	VT 1.2-1.6V

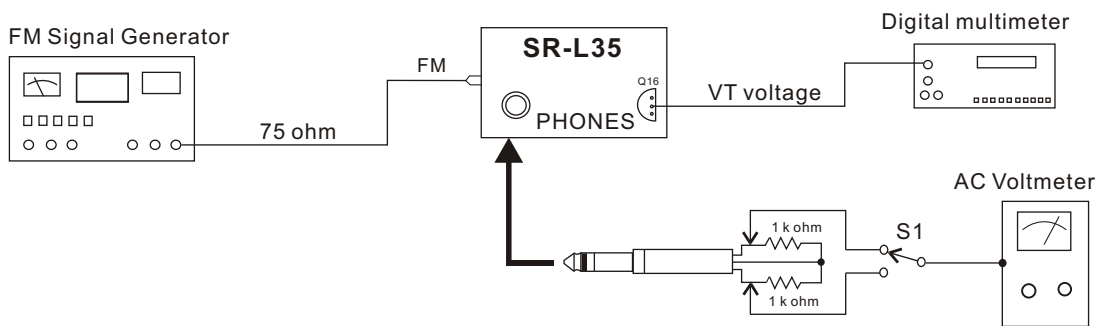
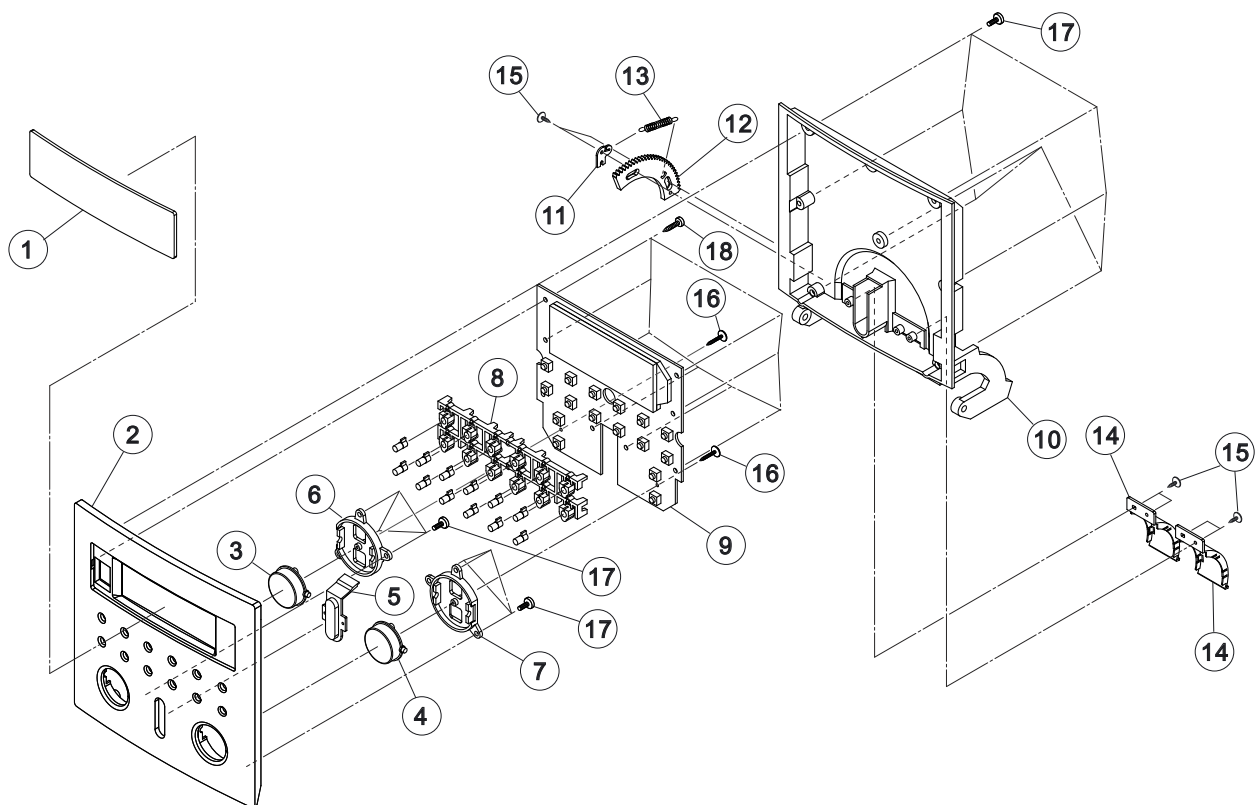


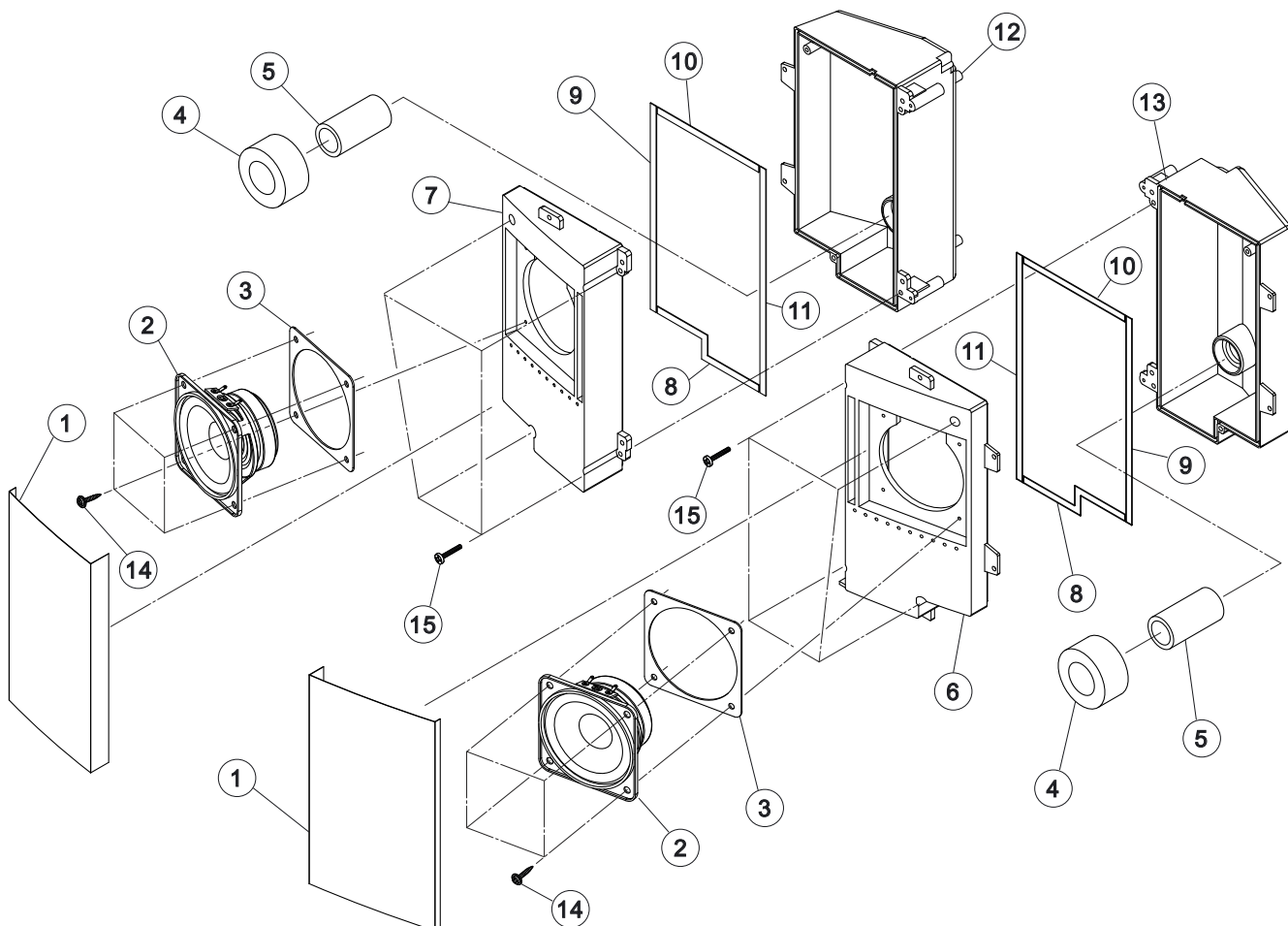
Fig. 3-2-4

4. EXPLODED VIEWS AND PARTS LIST

EXPLODED VIEW 1 - CD DOOR ASSEMBLY



EXPLODED VIEW 2 - R/L SPEAKER ASSEMBLY



SR-L35

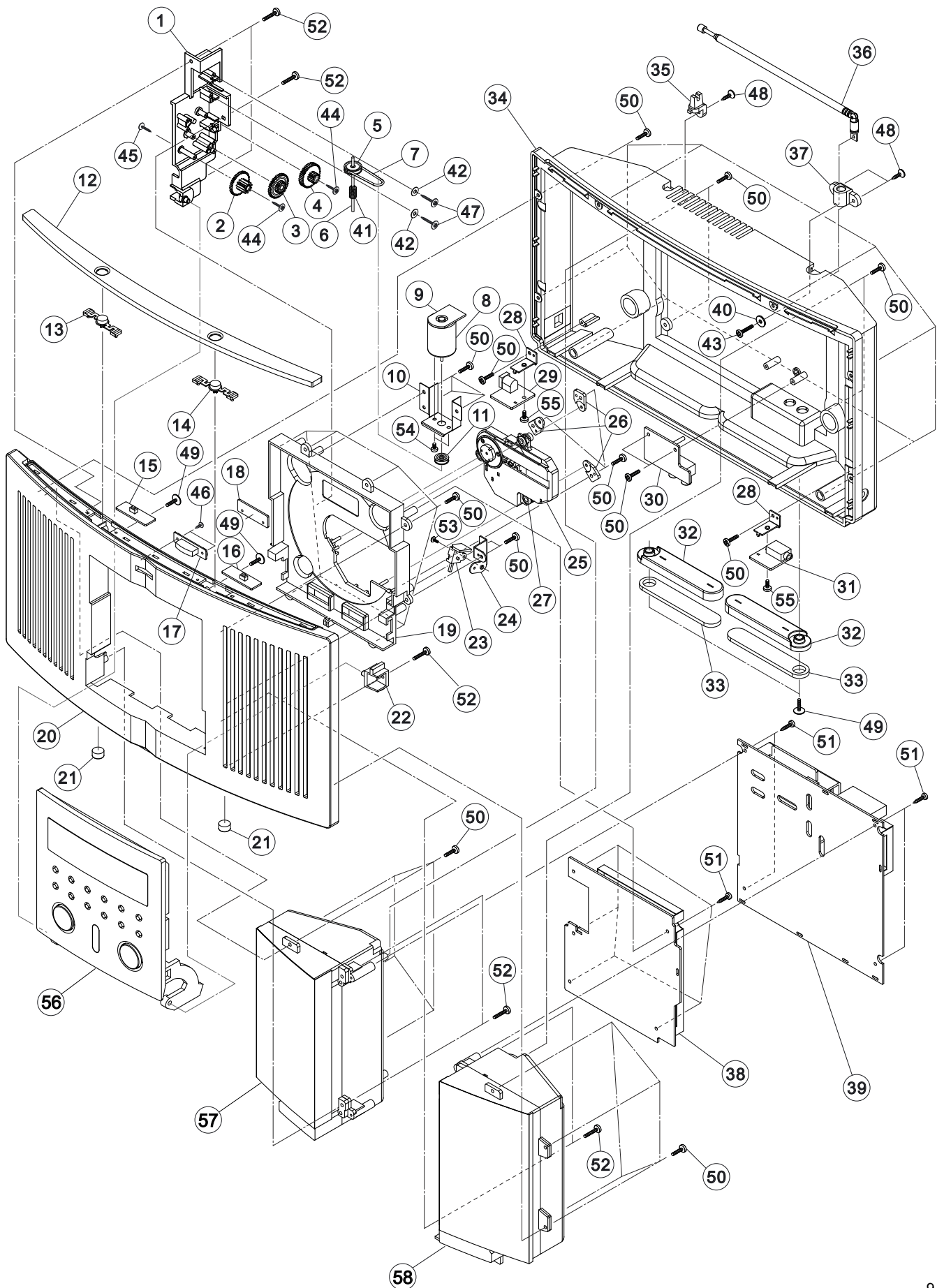
EXPLODED VIEW-1

REF. NO	PARTS NO.	DESCRIPTION	REMARKS
1-1	007-R35B0101	LCD WINDOW	
1-2	006-R35B0101	CD DOOR PANEL - BLACK	
	006-R35W0101	CD DOOR PANEL - WHITE	
	006-R35S0101	CD DOOR PANEL - SILVER GREY	
1-3	004-R35B0501	TUNER KNOB - BLACK	
	004-R35W0501	TUNER KNOB - WHITE	
	004-R35S0501	TUNER KNOB - SILVER GREY	
1-4	004-R35B0401	VOLUME KNOB - BLACK	
	004-R35W0401	VOLUME KNOB - WHITE	
	004-R35S0401	VOLUME KNOB - SILVER GREY	
1-5	007-SR350300	CD DOOR LENS	
1-6	010-SR350900	TUNER KNOB COVER	
1-7	010-SR350800	VOLUME KNOB COVER	
1-8	004-SR350300	FUNCTION KNOB	
1-9	100-SR352040	CD CONTROL PCBASSY	
1-10	010-SR350100	CD DOOR HOLDER	
1-11	011-SR350201	CD DOOR SPRING BRACKET	
1-12	008-SRL35004	CD DOOR GEAR-D	
1-13	031-SR350111	CD DOOR SPRING	
1-14	010-SR351100	WIRE COVER	
1-15	024-42006033	SCREW PWA2X6MM (BLACK)	
1-16	024-42010032	SCREW PWA2X10MM	
1-17	023-23008033	SCREW BB3X8MM (BLACK)	
1-18	024-13010032	SCREW PA3X10MM	

EXPLODED VIEW-2

REF. NO	PARTS NO.	DESCRIPTION	REMARKS
2-1	051-SRL35001	SPEAKER NET HIMERON	
2-2	061-SR350400	SPEAKER 4 OHM 2.75 INCHES	
2-3	035-SRL35052	SPEAKER EVA WASHER	
2-4	035-SRL35061	PAPER TUBE SPONGE	
2-5	044-SRL35031	SPEAKER PAPER TUBE L/R	
2-6	010-SR350600	SPEAKER PANEL - R	
2-7	010-SR350500	SPEAKER PANEL - L	
2-8	035-SRL35032	SPEAKER EVA SHEET - C 105X5X1MM	
2-9	035-SRL35022	SPEAKER EVA SHEET - B 153X5X1MM	
2-10	035-SRL35042	SPEAKER EVA SHEET - D 87X5X1MM	
2-11	035-SRL35012	SPEAKER EVA SHEET - A 168X5X1MM	
2-12	010-SR350301	SPEAKER BOX - L	
2-13	010-SR350402	SPEAKER BOX - R	
2-14	024-43010033	SCREW PWA3X10MM (BLACK)	
2-15	023-23014033	SCREW BB3X14MM (BLACK)	

EXPLODED VIEW 3 - MAIN ASSEMBLY



SR-L35

EXPLODED VIEW-3

REF. NO	PARTS NO.	DESCRIPTION	REMARKS
3-1	002-SR350200	CD DOOR GEAR BASE	
3-2	008-SRL35003	CD DOOR GEAR-C	
3-3	008-SRL35002	CD DOOR GEAR-B	
3-4	008-SRL35001	CD DOOR GEAR-A	
3-5	008-SRL35005	BELT PULLEY	
3-6	014-SRL35010	WORM GEAR SHAFT	
3-7	033-02301015	CD MOTOR BELT	
3-8	085-SRL35060	CD MOTOR - RF-370CA-15370	
3-9	100-SR352120	CD MOTOR PCB ASSY	
3-10	011-SR350300	CD MOTOR BRACKET	
3-11	008-SRL35007	MOTOR PULLEY	
3-12	010-R35B0701	TOP PLATE - BLACK	
	010-R35W0701	TOP PLATE - WHITE	
	010-R35S0701	TOP PLATE - SILVER GREY	
3-13	004-R35B0101	POWER KNOB - BLACK	
	004-R35W0101	POWER KNOB - WHITE	
	004-R35S0101	POWER KNOB - SILVER GREY	
3-14	004-R35B0201	CD OPEN/CLOSE KNOB - BLACK	
	004-R35W0201	CD OPEN/CLOSE KNOB - WHITE	
	004-R35S0201	CD OPEN/CLOSE KNOB - SILVER GREY	
3-15	100-SR352050	POWER ON/OFF PCB ASSY	
3-16	100-SR352060	CD OPEN/CLOSE PCB ASSY	
3-17	007-SR350200	POWER LENS	
3-18	100-SR352070	POWER LED PCB ASSY	
3-19	002-SR350100	CD BASE	
3-20	001-R35B0001	FRONT PANEL - BLACK	
	001-R35W0001	FRONT PANEL - WHITE	
	001-R35S0001	FRONT PANEL - SILVER GREY	
3-21	037-SR350100	RUBBER FOOT - A	
3-22	010-SR351000	CD DOOR SHAFT HOLDER - R	
3-23	100-SR352110	CD DOOR SW. PCB ASSY	
3-24	011-SR350400	CD OPEN/CLOSE SW BRACKET	
3-25	039-S8880130	CD DECK ASSY - CMS-M95BG6	
3-26	010-S8880100	CD RUBBER CAP	
3-27	037-SR350300	CD RUBBER - BLACK	
3-28	011-SR350100	DC JACK/HEADPHONE PCB BRACKET	
3-29	100-SR352080	DC JACK PCB ASSY	
3-30	100-SR352100	AUX JACK PCB ASSY	
3-31	100-SR352090	PHONE JACK PCB ASSY	
3-32	010-R35B0201	REVOLUTION FOOT - BLACK	
	010-R35W0201	REVOLUTION FOOT - WHITE	
	010-R35S0201	REVOLUTION - SILVER GREY	
3-33	037-SR350200	RUBBER FOOT - B	



EXPLODED VIEW-3

REF. NO	PARTS NO.	DESCRIPTION	REMARKS
3-34	001-R35B0201	REAR PANEL - BLACK [T/C]	
	001-R35W0201	REAR PANEL - WHITE [T/C]	
	001-R35S0201	REAR PANEL - SILVER GREY [TC]	
	001-R35B0202	REAR PANEL - BLACK [E] [UK] - W/O MADE IN CHINA	
	001-R35B0203	REAR PANEL - BLACK [E][UK] - W/MADE IN CHINA	
	001-R35W0202	REAR PANEL - WHITE [E] [UK] - W/O MADE IN CHINA	
	001-R35W0203	REAR PANEL - WHITE [E] [UK] - W/MADE IN CHINA	
	001-R35S0202	REAR PANEL - SILVER GREY [E] [UK] - W/O MADE IN CHINA	
	001-R35S0203	REAR PANEL - SILVER GREY [E] [UK] - W/MADE IN CHINA	
3-35	009-R35B0201	FM ANT STOPPER - BLACK [E] [UK]	
	009-R35W0201	FM ANT STOPPER - WHITE [E] [UK]	
	009-R35S0201	FM STOPPER - SILVER GREY [E] [UK]	
3-36	089-00000014	FM ROD ANTENNA [E] [UK]	
3-37	009-R35B0101	FM ANT HOLDER - BLACK [E] [UK]	
	009-R35W0101	FM ANT HOLDER - WHITE [E] [UK]	
	009-R35S0101	FM ANT HOLDER - SILVER GREY [E] [UK]	
3-38	100-SR352020	CD PCB ASSY	
3-39	100-SR352010	MAIN PCB ASSY [T/C]	
	100-SR351030	MAIN PCB ASSY [E] [UK]	
3-40	012-10060380	METAL WASHER 3.8X6X1MM	
3-41	008-SRL35006	CD DOOR WORM GEAR	
3-42	012-05080208	NYLON WASHER 2X8X0.5MM(BLACK)	
3-43	022-23012031	SCREW BM3X12MM	
3-44	024-41806033	SCREW PWA1.8X6MM (BLACK)	
3-45	024-41810032	SCREW PWA1.8X10MM	
3-46	024-42006033	SCREW PWA2X6MM (BLACK)	
3-47	024-42010032	SCREW PWA2X10MM	
3-48	024-33010031	SCREW KA3X10MM	
3-49	023-43010033	SCREW PWB3X10MM (BLACK)	
3-50	023-23010033	SCREW BB3X10MM (BLACK)	
3-51	024-13010032	SCREW PA3X10MM	
3-52	023-23012033	SCREW BB3X12MM (BLACK)	
3-53	022-22605032	SCREW BM2.6X5MM	
3-54	022-83004032	SCREW PM3X4MM	
3-55	022-23006032	SCREW BM3X6MM	
3-56		CD DOOR ASSEMBLY	
3-57		L-SPEAKER ASSEMBLY	
3-58		R-SPEAKER ASSEMBLY	

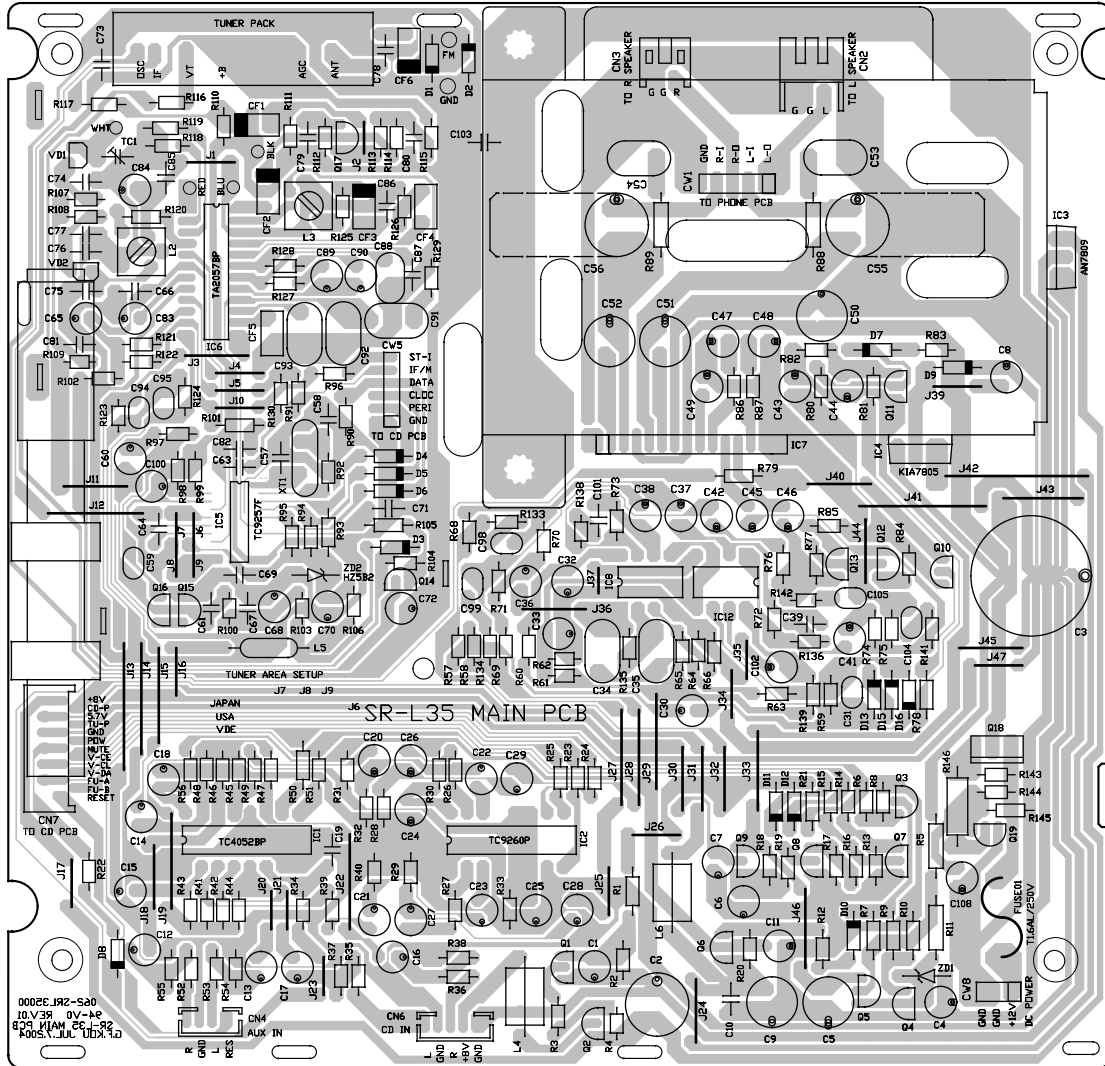
SR-L35

5 PC BOARDS AND PARTS LIST

MAIN PCB ASSY

REF. NO	PARTS NO.	DESCRIPTION	REMARKS
	100-SR352010	MAIN PCB ASSY [T/C]	
	100-SR351030	MAIN PCB ASSY [E] [UK]	
	062-SRL35000	MAIN PCB	
	055-SLD90000	TUNER PACK	
	020-SD900000	FM ANTENNA JACK [T/C]	
C2,55,56	 072-30100161	E. CAP 1000UF/16V	
C3	 072-30680251	E. CAP 6800UF/25V	
CF1,2	081-31070001	FM CERAMIC FILTER L10.7MA5-A	
CF3	081-04500000	AM CERAMIC FILTER SFU450B	
CF4	093-11070003	CERAMIC FILTER 10.7MHZ	
CF5	093-A4560001	RESONATOR B456F16	
CF6	054-0GP18000	FM ANT FILTER GFMB3	
CN2	082-20340100	CONNECTOR 3P P=2.5MM	
CN3	082-20300100	CONNECTOR 3P P=2MM	
CN4	082-10400100	CONNECTOR 4P P=2MM	
CN6	082-10500100	CONNECTOR 5P P=2MM	
CN7	082-21350300	FPC CONNECTOR 13P P=1.25MM	
D1-D13,15,16	077-00414801	DIODE 1N4148	
FUSE01	090-22516022	FUSE T1.6AL 250V	
IC1	075-00405201	IC - TC4052BP	
IC2	075-00926001	IC - TC9260P	
IC3	075-00780801	IC - AN7808	
IC4	075-00780501	IC - KIA7805PI	
IC5	075-09257F21	IC - TC9257F	
IC6	075-00205701	IC - TA2057N	
IC7	075-00822911	IC - TA8229K	
IC8,12	075-00455808	IC - BA4558	
L1	096-D2930011	AM BAR ANT COIL 68T:20T	
L2	079-D2930210	AM OSC COIL - RED	
L3	079-D2800011	AM IFT COIL - YELLOW	
L4,6	052-SRL50010	HORIZONTAL FERRITE CORE	
L5	095-10220001	INDUCTOR 220UH	
Q1,3,4,7,8,10,	076-00C94500	TR - 2SC945	
Q11-13,15-17,19			
Q2	076-00B54400	TR - 2SB544F	
Q5	076-C2001L00	TR - 2SC2001L	
Q6,9	076-00A73300	TR - 2SA733	
Q18	076-00B98600	TR - 2SB986	
TC1	073-00020022	TC. CAP 20PF	
VD1,VD2	077-50014901	ISV149	
XT1	093-45000000	CRYSTAL 4.5MHZ	
ZD1	077-3011B20H	ZENER DIODE 10V	
ZD2	077-3005B30H	ZENER DIODE 4.8-5.0V	

MAIN PCB

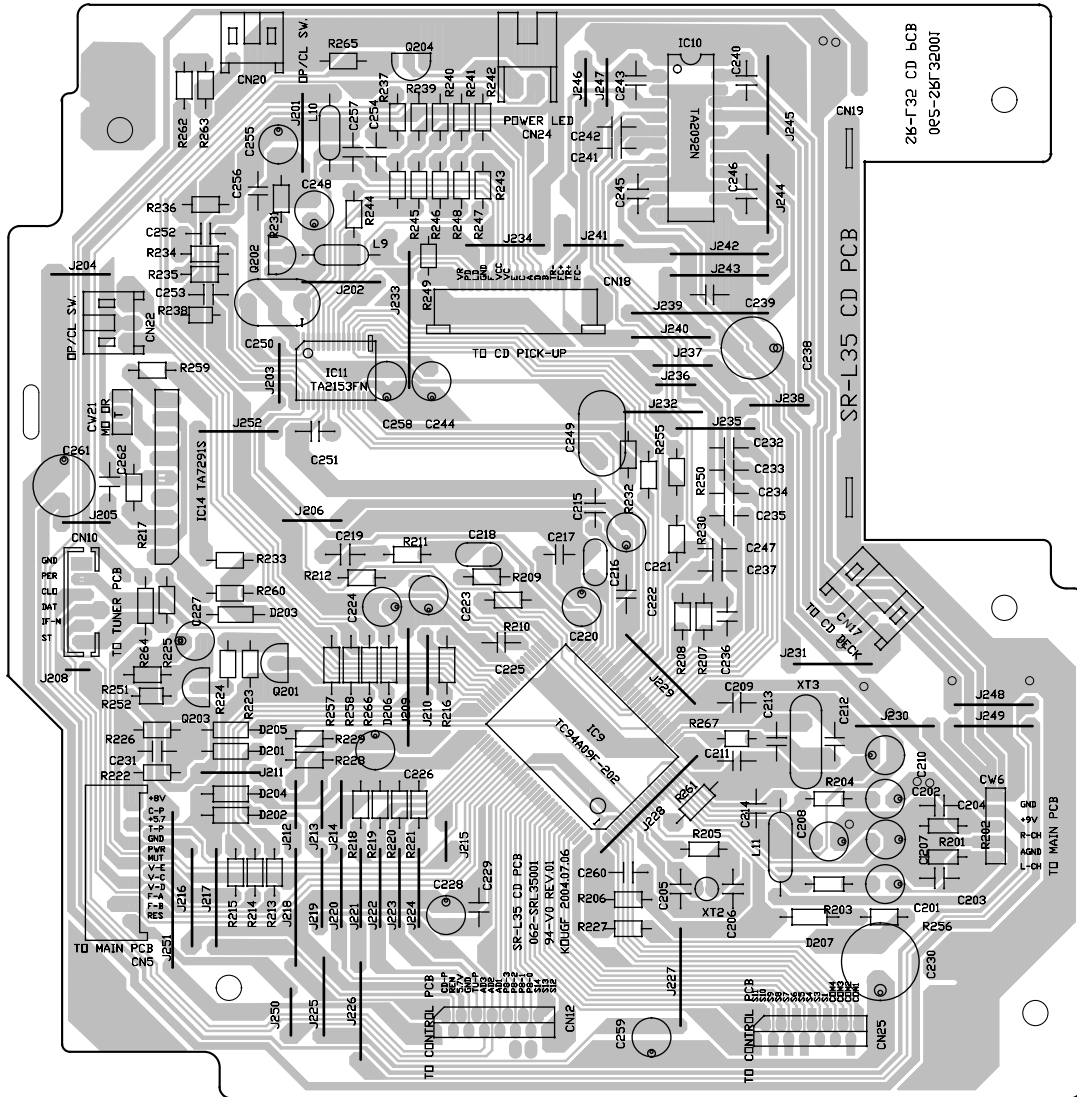


SR-L35

CD PCB ASSY

REF. NO	PARTS NO.	DESCRIPTION	REMARKS
	100-SR352020	CD PCB ASSY	
	062-SRL35001	CD PCB	
C230	⚠ 072-30220101	CE 2200UF/10V	
CN5	082-21350300	FPC CONNECTOR 13P P=1.25MM	
CN10	082-10600100	CONNECTOR 6P P=2MM	
CN12	082-21530300	FPC CONNECTOR 15P P=1MM	
CN17	082-20660100	CONNECTOR 6P P=1.5MM	
CN18	082-31630100	FPC CONNECTOR 16P P=1MM	
CN20,22	082-20300100	CONNECTOR 3P P=2MM	
CN24	082-20240100	CONNECTOR 2P P=2.5MM	
CN25	082-21430300	FPC CONNECTOR 14P P=1MM	
D201-207	077-00414801	DIODE 1N4148	
IC9	075-094A0931	IC - TC94A09F-202	
IC10	075-00209001	IC - TA2092A	
IC11	075-00215301	IC - TA2153FN	
IC14	075-00729111	IC - TA7291S	
L9,10	095-00100001	INDUCTOR 10UH	
L11	052-SRL50010	HORIZONTAL FERRITE CORE	
Q201	076-00B54400	TR - 2SB544F	
Q202	076-00A73300	TR - 2SA733	
Q203,204	076-00C94500	TR - 2SC945	
XT2	093-A0750002	CRYSTAL 75KHZ	
XT3	093-11693440	CRYSTAL 16.9344MHZ	

CD PCB



SR-L35

CD CONTROL PCB ASSY

REF. NO	PARTS NO.	DESCRIPTION	REMARKS
	100-SR352040	CD CONTROL PCB ASSY	
	062-SRL35004	CD CONTROL PCB	
CN26	082-21530300	CONNECTOR 15P P=1MM	
CN27	082-21430300	CONNECTOR 14P P=1MM	
LCD	080-SRL50021	LCD DISPLAYTCM-3866	
LED02	094-06030502	BLUE LED 5MM	
Q301-303,305	076-00C94500	TR - 2SC945	
SW02-017	063-0GP28020	TACT SW. H=5MM	
U01	083-00LT1000	RECEIVER SENSOR	

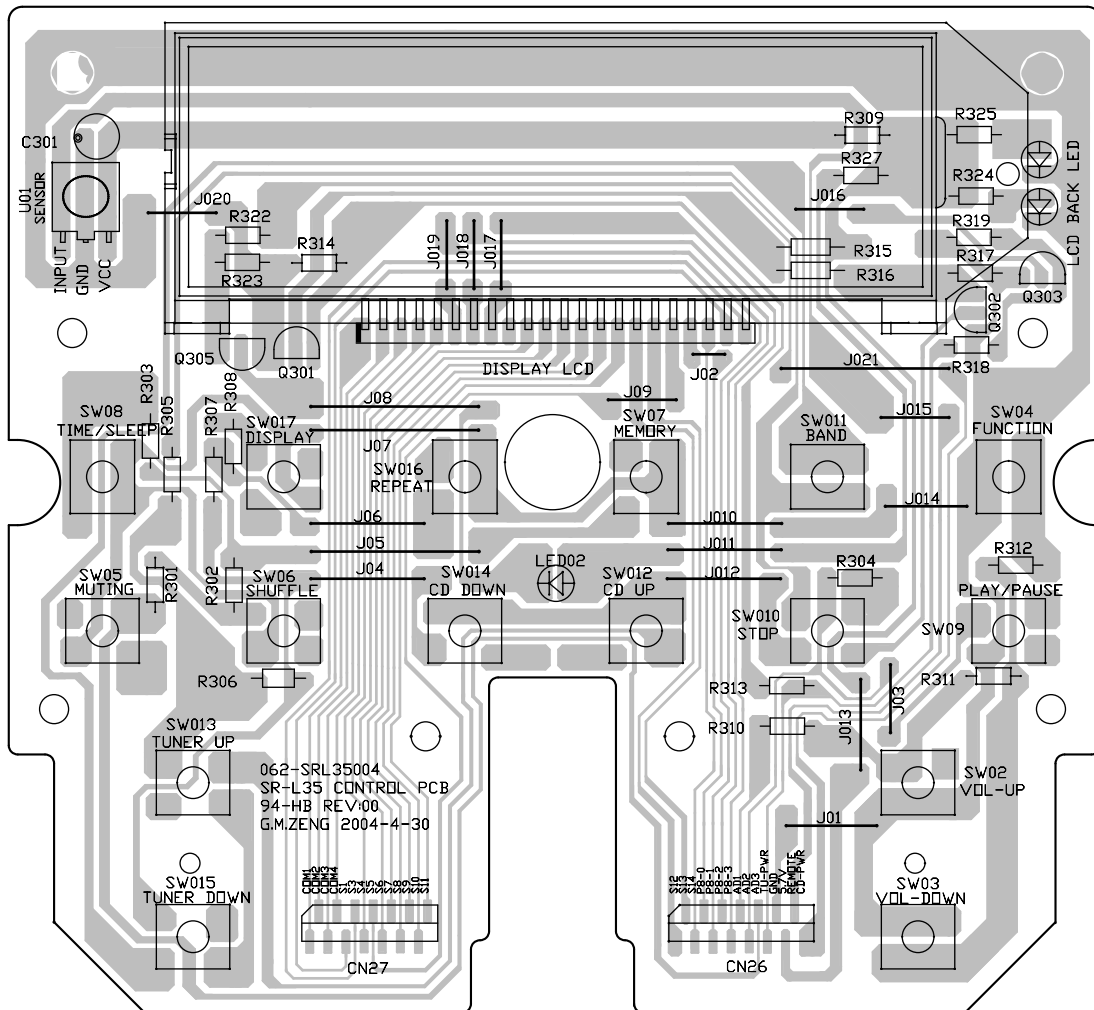
POWER ON/OFF PCB ASSY

REF. NO	PARTS NO.	DESCRIPTION	REMARKS
	100-SR352050	POWER ON/OFF PCB ASSY	
	062-SRL35003	POWER ON/OFF PCB	
SW01	063-SRL35090	TACT SW. H=5.5MM	

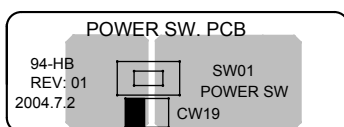
CD OPEN/CLOSE PCB ASSY

REF. NO	PARTS NO.	DESCRIPTION	REMARKS
	100-SRL352060	CD OPEN/CLOSE PCB ASSY	
	062-SRL35003	CD OPEN/CLOSE PCB	
SW018	063-SRL35090	TACT SW. H=5.5MM	

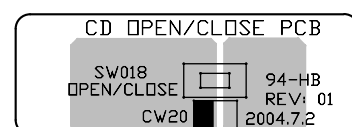
CD CONTROL PCB



POWER ON/OFF PCB



CD OPEN/CLOSE PCB



SR-L35

POWER LED PCB ASSY

REF. NO	PARTS NO.	DESCRIPTION	REMARKS
LED01	100-SR352070	POWER LED PCB ASSY	
	062-SRL35003	POWER LED PCB	
	094-06030502	BLUE LED 5MM	

DC JACK PCB ASSY

REF. NO	PARTS NO.	DESCRIPTION	REMARKS
CN8 JK1	100-SR352080	DC JACK PCB ASSY	
	062-SRL35003	DC JACK PCB	
	082-10340100	CONNECTOR 3P P=2.5MM	
	064-20110102	DC JACK TD0202-20	

PHONE JACK PCB ASSY

REF. NO	PARTS NO.	DESCRIPTION	REMARKS
CN1 JK2 L12	100-SR352090	PHONE JACK PCB ASSY	
	062-SRL35003	PHONE JACK PCB	
	082-10540100	CONNECTOR 5P P=2.5MM	
	064-35020101	HEAD PHONE JACK TE-03506S-11	
	095-10270001	INDUCTOR 270UH	

AUX JACK PCB ASSY

REF. NO	PARTS NO.	DESCRIPTION	REMARKS
JK3 SW023	100-SR352100	AUX JACK PCB ASSY	
	062-SRL35005	AUX JACK PCB	
	086-SRL35020	AUX JACK 2P TR-0209RW	
	063-SRL35080	TACT SWITCH TS-01L8B	

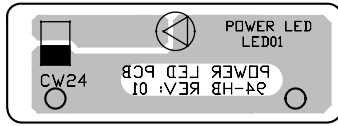
CD DOOR SW PCB ASSY

REF. NO	PARTS NO.	DESCRIPTION	REMARKS
SW19	100-SR352110	CD DOOR SW PCB ASSY	
	063-SRL35400	LEAF SWITCH	

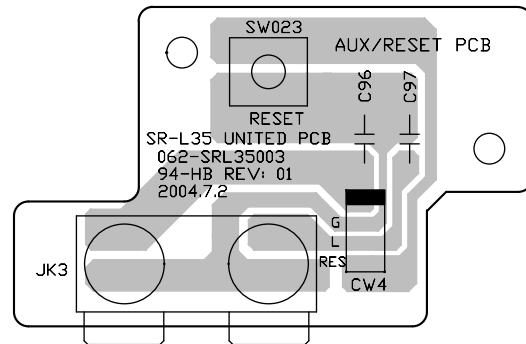
DC MOTOR PCB ASSY

REF. NO	PARTS NO.	DESCRIPTION	REMARKS
CN21	100-SR352120	DC MOTOR PCB ASSY	
	062-SRL35003	CD MOTOR PCB ASSY	
	082-10300100	CONNECTOR 3P P=2MM	

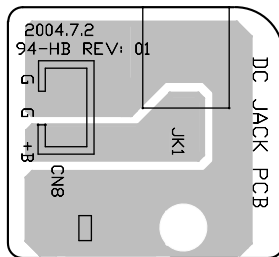
POWER LED PCB



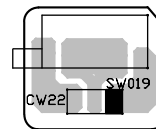
AUX JACK PCB



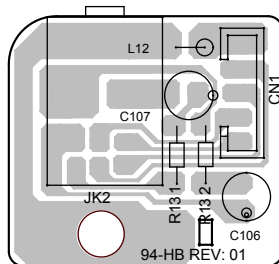
DC JACK PCB



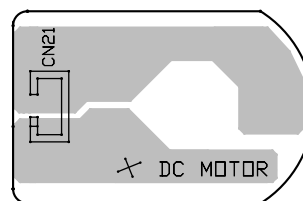
CD DOOR SW PCB



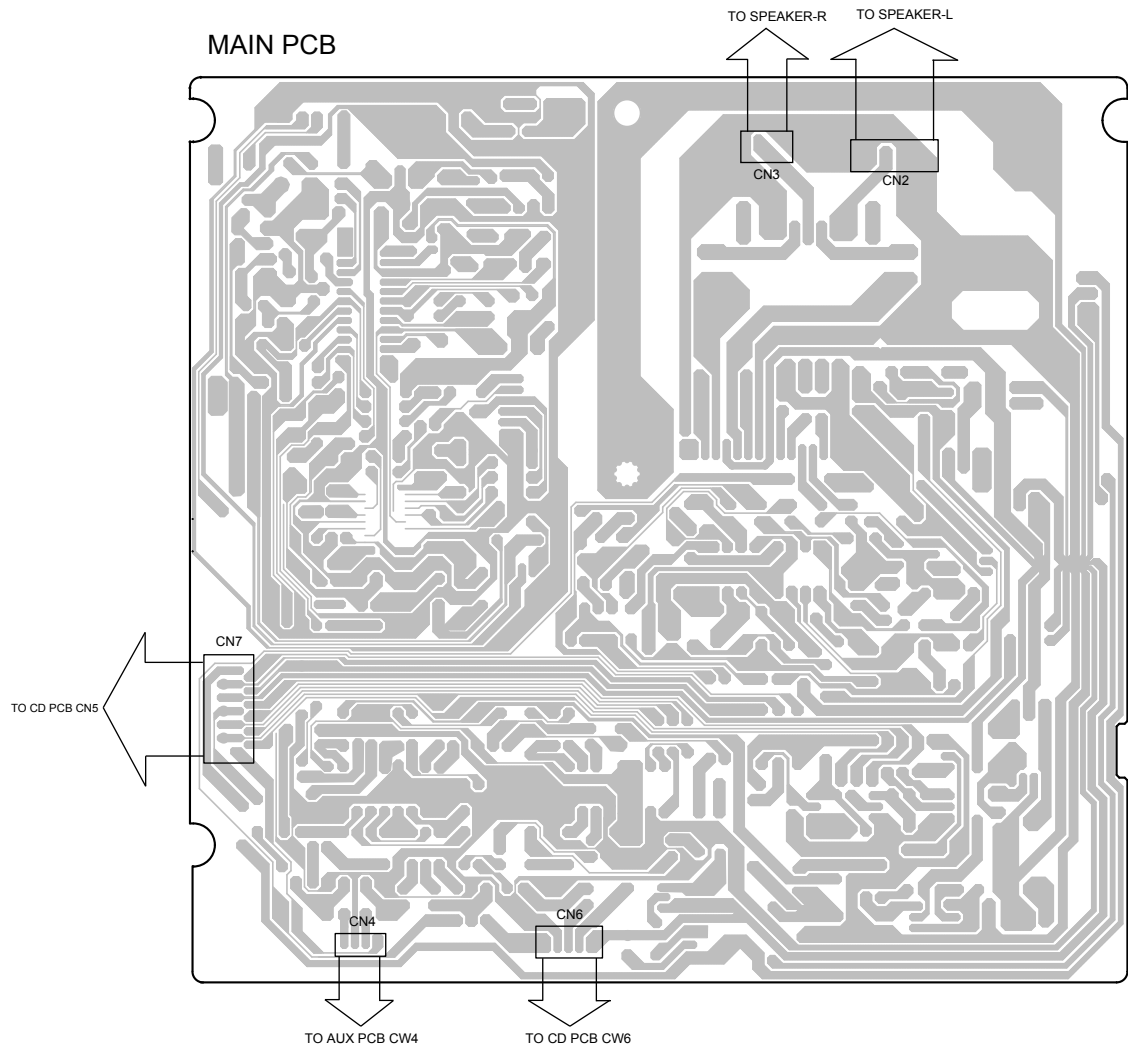
PHONE JACK PCB

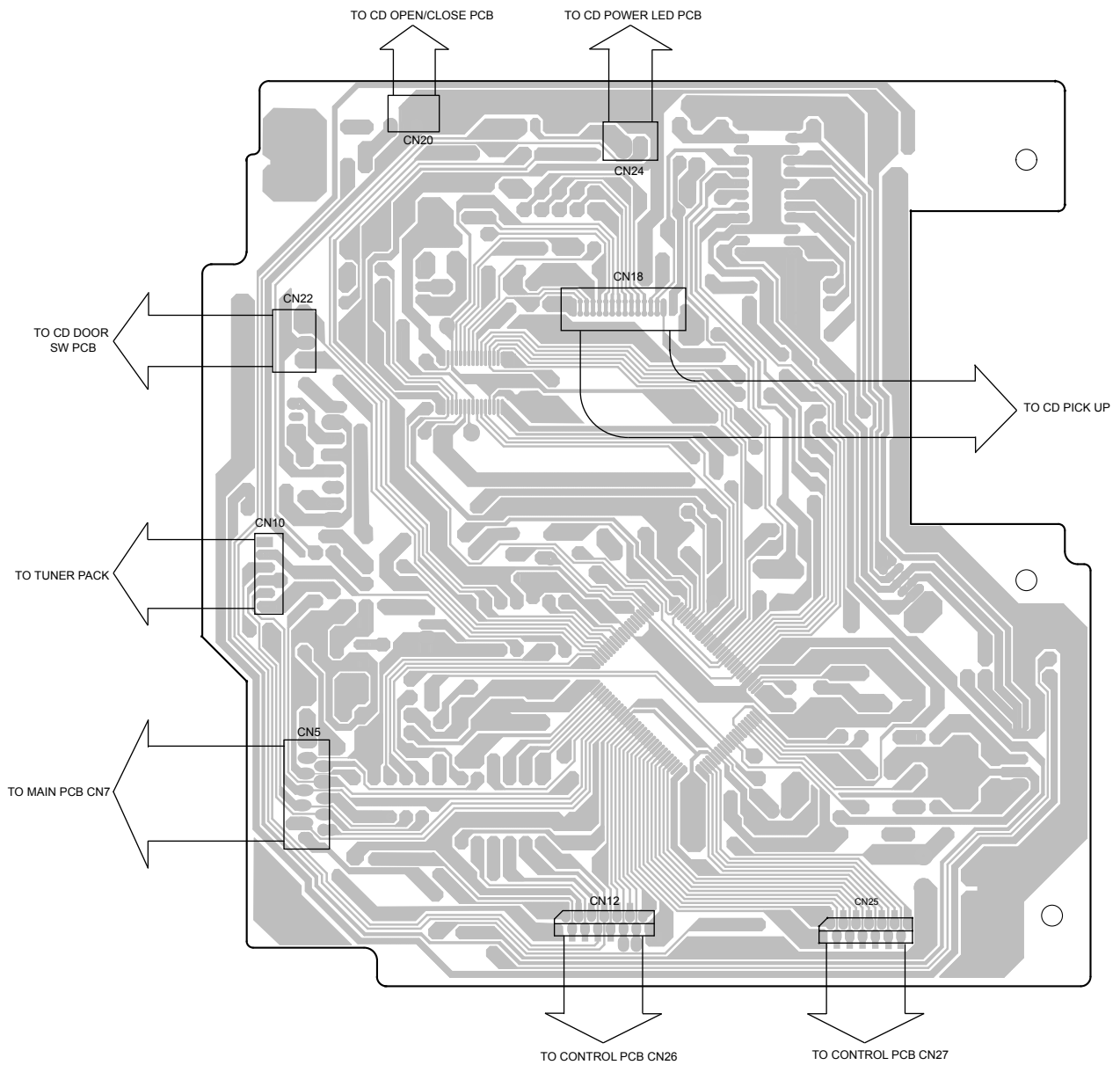


DC MOTOR PCB



6 WIRING DIAGRAM





SR-L35

7 INCLUDED ACCESSORIES

INCLUDED ACCESSORIES

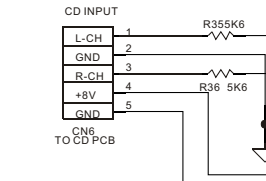
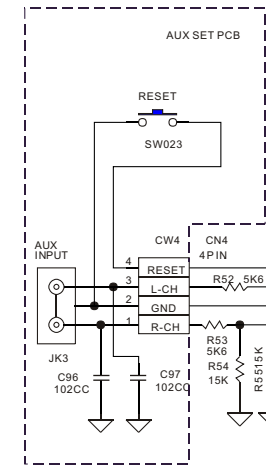
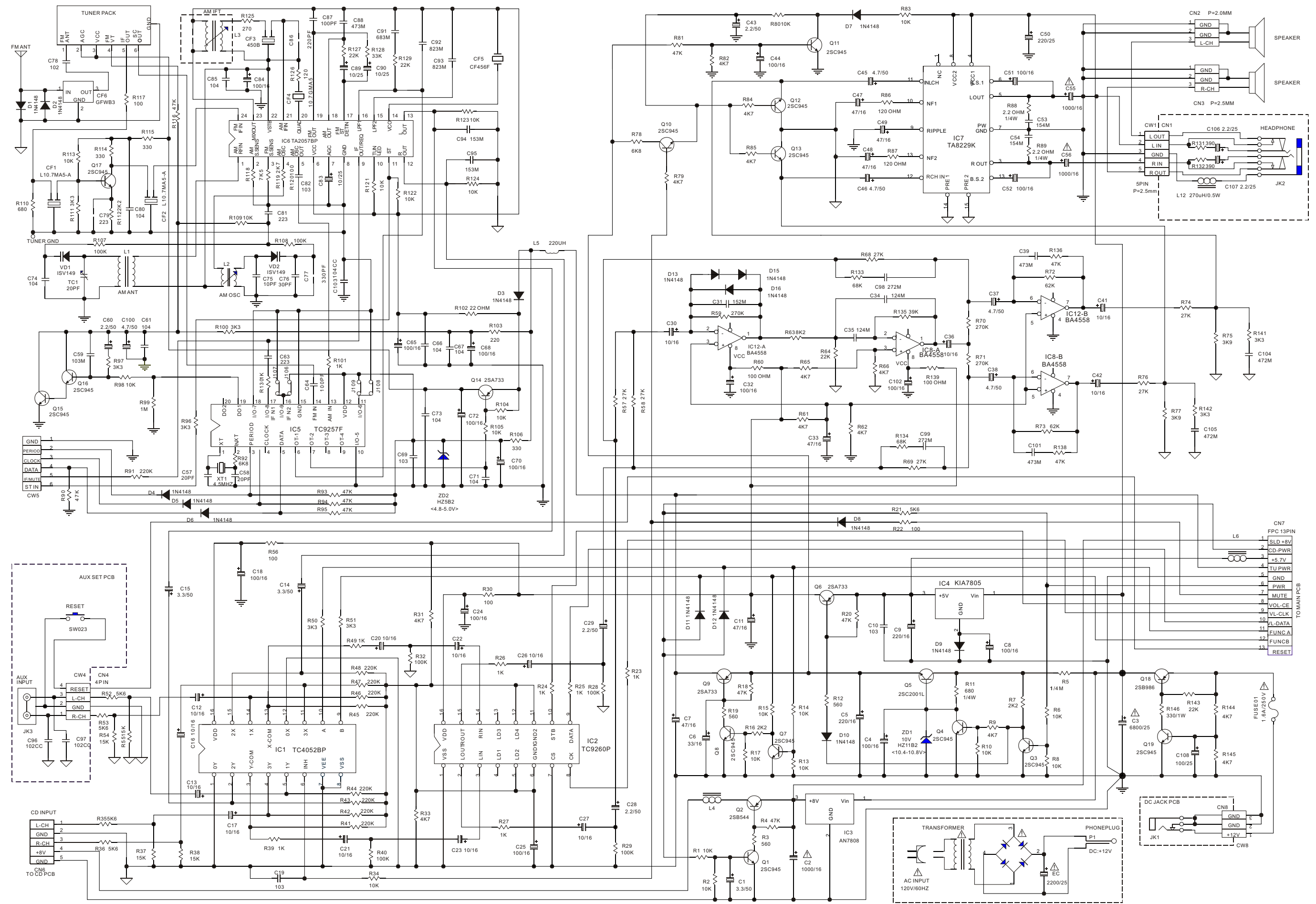
REF. NO	PARTS NO.	DESCRIPTION	REMARKS
	046-SRL35000	INSTRUCTION MANUAL - E/F [T/C]	
	046-SRL35020	INSTRUCTION MANUAL - E/F/S [E] [UK]	
	046-SRL35030	INSTRUCTION BOOK - G/H/I [E] [UK]	
	084-SR351200	AC ADAPTER UL 120V/60Hz [T/C]	
	084-SR351201	AC ADAPTER UL 120V/60Hz [T/C] - SILVER GREY	
	084-SR351100	AC ADAPTER VDE 230V/50Hz [E]	
	084-SR351400	AC ADAPTER BS1 240/50HZ [UK]	
	049-SRL35010	TEMPLATE SHEET [T/C]	
	049-SRL35020	TEMPLATE SHEET [E] [UK]	
	RC-969B	REMOTE CONTROL (BLACK)	
	RC-969W	REMOTE CONTROL (WHITE)	
	RC-969S	REMOTE CONTROL (SILVER GREY)	
	089-000000-12	FM LEAD-TYPE ANTENNA x 1 [T/C]	
	089-000000-14	FM LEAD-TYPE ANTENNAx1 [E] [UK]	

SR-L35

TEAC

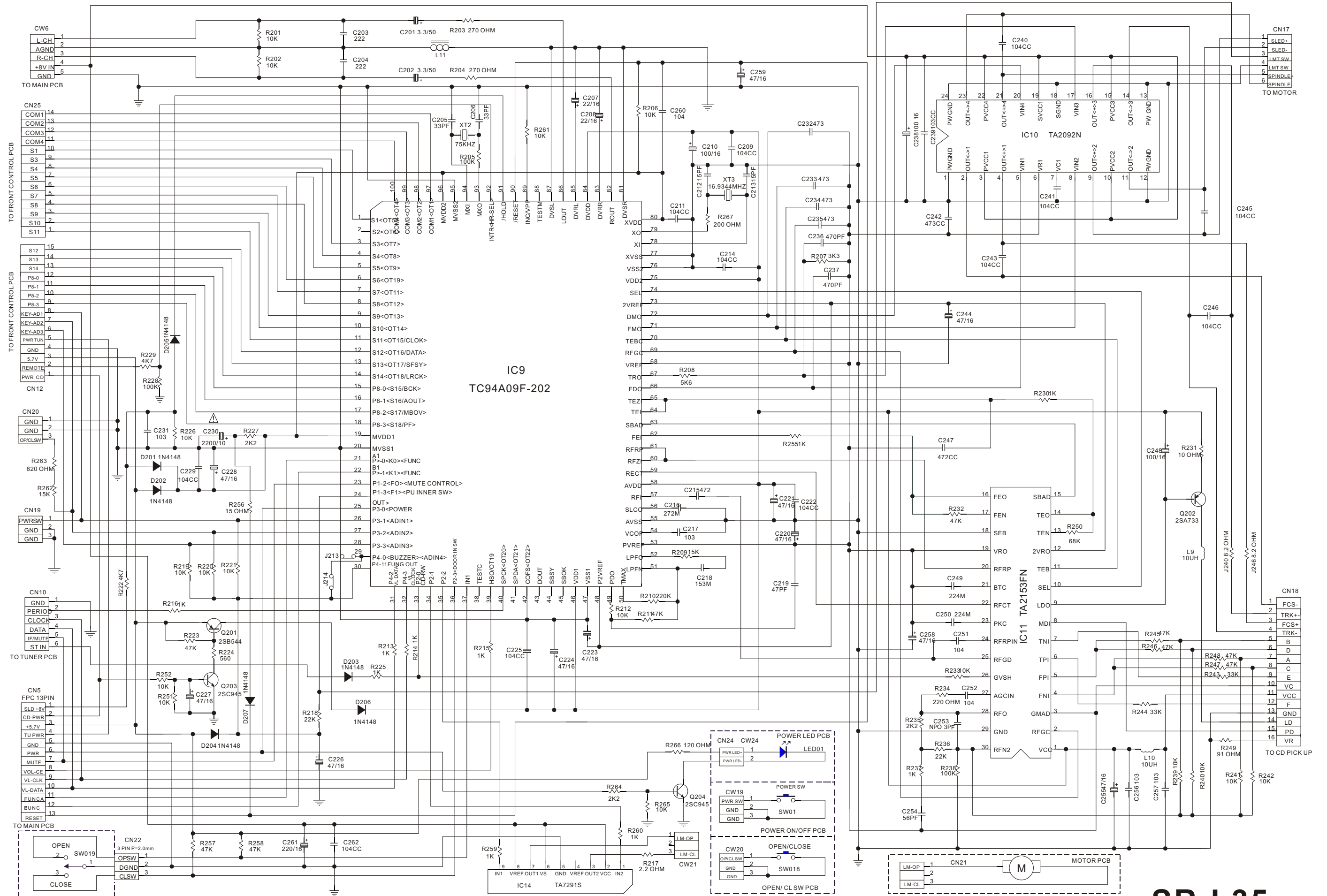
TEAC CORPORATION	3-7-3 Nakacho, Musashino-shi, Tokyo 180-8550, Japan Phone:(0422)52-5081
TEAC AMERICA, INC.	7733 Telegraph Road, Montebello, California 90640 Phone: (323)726-0303
TEAC CANADA LTD.	5939 Wallace Street, Mississauga, Ontario L4Z 1Z8, Canada Phone: (905)-890-8008
TEAC MEXICO, S.A.De C.V.	Campeños 184, Col. Granjas Esmeralda, 09810, Mexico Phone: (525)-581-5500
TEAC UK LIMITED	5 Marlin House, Croxley Business Park, Watford, Hertfordshire, WD18 8TE, U.K. Phone: 01923-819699
TEAC DEUTSCHLAND GmbH	Bahnstrasse 12, 65205 Wiesbaden-Erbenheim, Germany Phone:0611-71580
TEAC FRANCE S.A.	17, Rue Alexis-de-Tocqueville, CE 005 92182 Antony Cedex, France Phone:(1)42.37.01.02
TEAC NEDERLAND BV	Oeverkruid 15,NL-4941 W Raamsdonksveer, Nederland Phone:0162-510210
TEAC BELGIUM NV/SA.	c/o TEAC NEDERLAND BV, Oeverkruid 15, NL-4941 W Raamsdonksveer, Nederland Phone:+31-162-510860
TEAC ITALIANA S.p.A.	Via C, Cantu 11, 20092 Cinisello Balsamo, Milano, Italy Phone:02-66010550
TEAC AUSTRALIA PTY., LTD.	280 William Street, Melbourne VIC 3000, Australia Phone:(03)9672-2400
A.B.N.	80 005 408 462

MAIN PCB



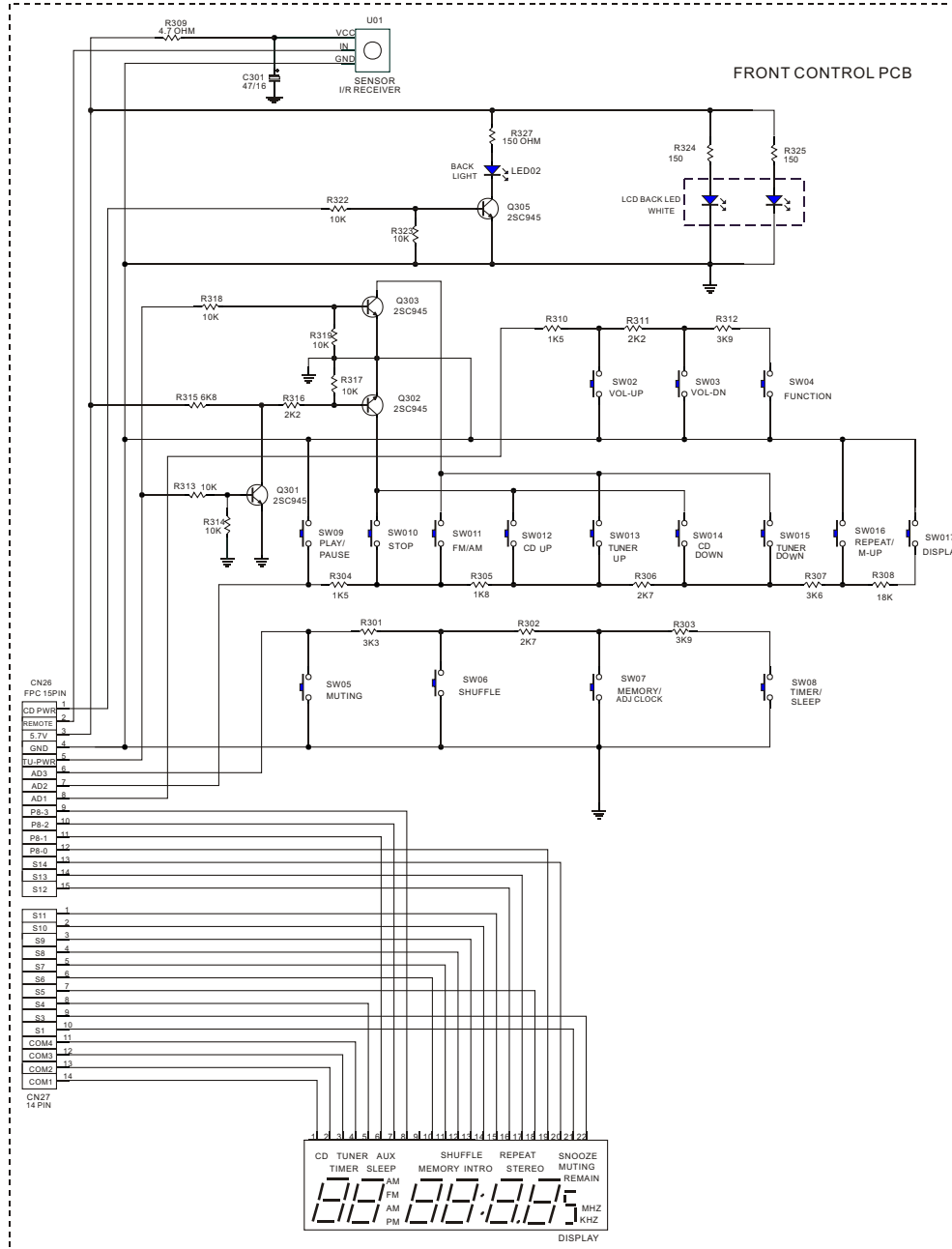
SR-L35
WALL-MOUNTABLE CD RECEIVER

CD PCB

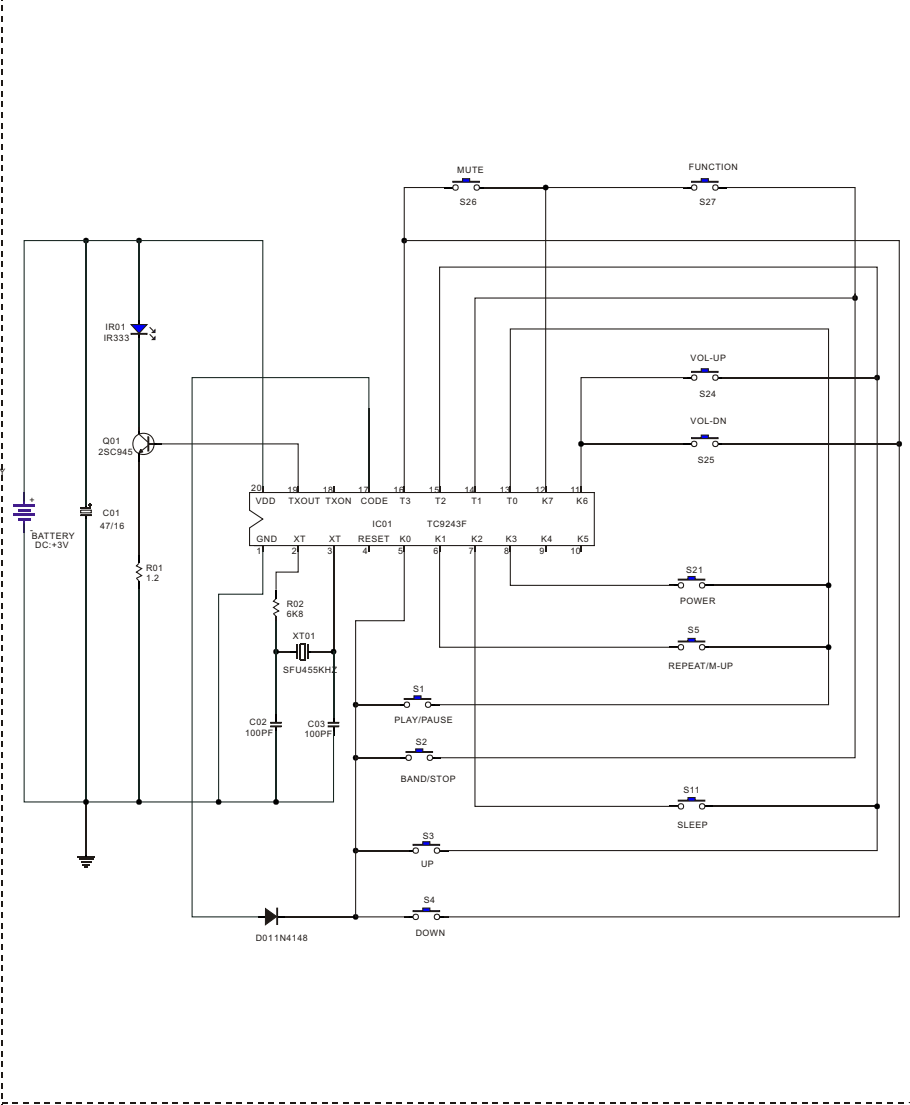


SR-L35
WALL-MOUNTABLE CD RECEIVER

CD CONTROL PCB



REMOTE CONTROL PCB



SR-L35 WALL-MOUNTABLE CD RECEIVER